



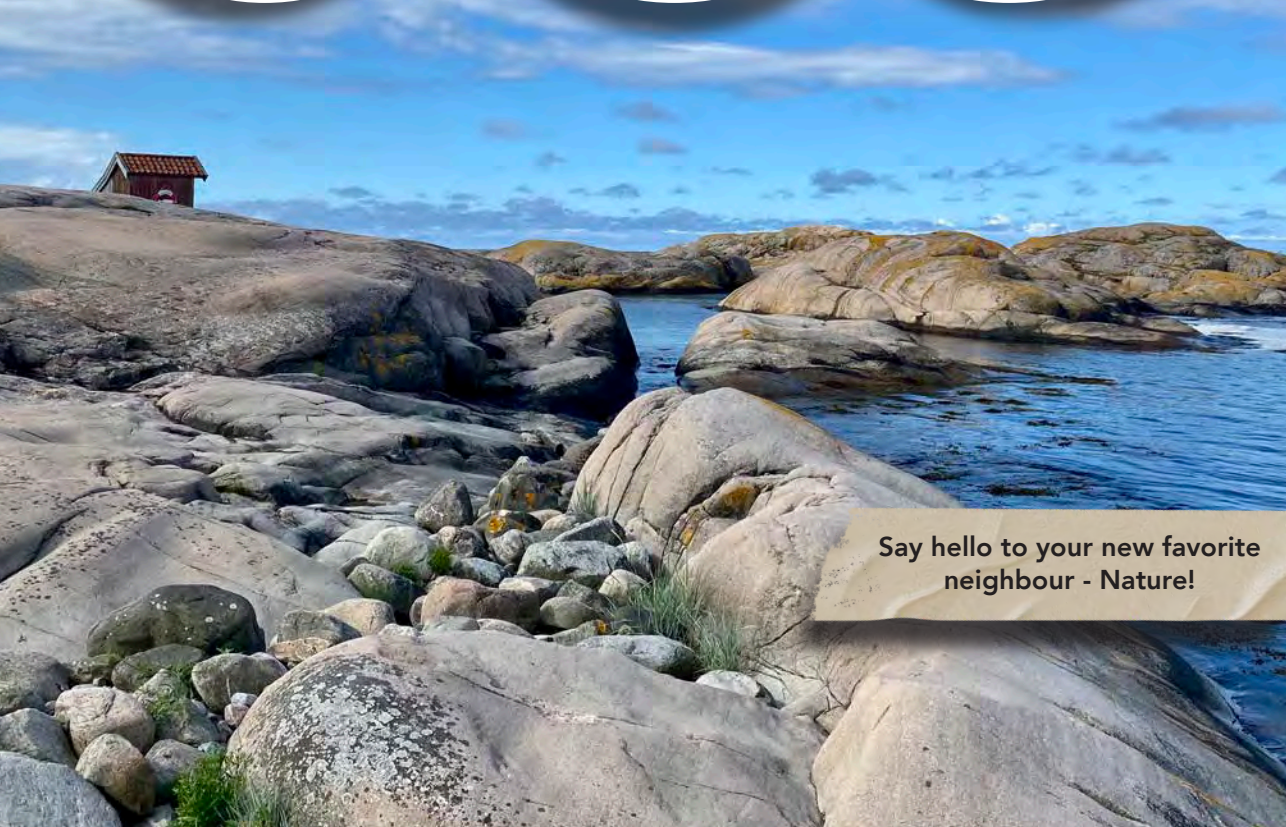
2022

Welcome to



Saltviks Camping

HAVET. KLIPPORNA. KRABBFISKET. FAMILJEN.



Say hello to your new favorite
neighbour - Nature!



Saltviks Camping

HAVET. KLIPPORNA. KRABBEISKET. FAMILJEN.

Saltvik 7, 457 95 Grebbestad

tel. +46525-212 49

info@saltvikscamping.se

www.saltvikscamping.se

Welcome to Saltvik!

We are a familiar year-round campsite located 6 km outside of Grebbestad right by the nature sanctuary Tjurpannan.

At us here at Saltvik it is important that you enjoy your stay. Therefore we feel that when the clock strikes 23.00 all of our guests should enjoy the silence. People who are still awake shall consider this and behave after that. One that through a disturbance or loud behavior do not follow our instructions we consider us entitled to refuse from the campsite. If you at any time feel disturbed based on another guests behavior or noise please contact us at +46 525-212 49.

We also want to let you know that some traffic may occur due to some cabinowners that have to go through the campsite. During peak season we also have entertainment at the restaurant in the evenings. If you have any further questions our staff will be at your disposal and try to help you any way they can.



Welcome to us at Saltviks Camping!
Greetings from the Ulvhammar family
with staff.

HOW THE CAMPSITE STARTED

During worldwar two, swedish soilders where stationed in what we today call Tjurpannan. These soilders fell in love with the amazing enviroment and when the war ended, they brought their families here to camp. When more people arrived here the need of facilities became required.

The brothers Erik and Axel Karlsson, two local fishers, installed coldwatershowers and toilets. Years passed by and the number of visitors became more and more, so in time the coldwatershowers became showers with hotwater, a kiosk and snackbar opened up. Now the snackbar has turned into a restaurant, the kiosk into a boutique and the campsite is constantly changing for the better. In 1977 it was time for the brothers to pass on the campsite, there niece Dick Ulvhammar took over and in the legacies his son Joakim began to take on more responsibility. Now a days the campsite is run by Dick, Joakim and his wife Elin and campsite is constantly in transformation!



@saltvikscamping

Like **Saltviks Camping** on facebook
to get information and updates!





RECEPTION

Reception is opened every day during peak season.
This is where you check in and out from your visit.

On your arrival: Access to cottage, Höjden, Utsikten and Klippan is 15.00. Access to campingspot for caravan, motorhome and tent may occur earlier, however not before 13.00.

On your departure: Check-out from all of our accomodations is 12.00.

Here at the reception you can rent golf club for miniaturegolf and play poolfootball. If we can make your visit here with us easier we will do our best. Therefore during peak season, we have long opening hours so that we can be at your disposal at all time. Before and after peak season we have our reception located in the store. In the reception you can find maps, tips and information regarding activities in the close by area. If our shop at the beach is closed and you would like to rent our boats, pedalos or SUP you can contact the reception.

As a camp guest, you are welcome to us every day of the year with your caravan, motorhome, tent or to rent one of our fully equipped cabins. It is also very important to us that our guests here at Saltvik feel right at home. We would like to hear your point of view of your stay, it is thanks to your words we can evolve and become better.

Campsite is
open all year
round!



Opened every
day during
peak season
8.00-22.00





GOOD TO KNOW

Activities

You can find our activity program for the summer season on our Facebookpage or on our website www.saltvikscamping.se

Ancon Order

The application for you who wants to enjoy restaurantfood at home. You can order a selection of favorites from our Bistro and come by to bring up your order or under a specific time get it delivered to your campsite.

Bathing places

At the campsite we have a shallow beach which is perfect for families. If you go past the red cottages you will find another beach and you can also bathe and jump from the cliffs.

Bed/chair for smaller children

You can rent bed and chairs in our reception.

Sauna

You find our sauna in servicehouse number 3. Please use bathingclothes when you use our sauna. The sauna is located between woman/gentlemen shower. To start you press the button on the outside of the sauna. It takes about 30 minutes to get it warm.

Bistro

Bistro Tjurpannan is open every day during the peak season. Open at 12 and kitchen closes at 22.

Fire extinguisher

There are total of 8, for exact position please see our map.

Store/Boutique

In our store you can always find freshly baked bread & hot coffee. During the summer season the store is opened between 8-22.

Rent a boat

Pedalos, motorboats and SUP-boards are available to rent in our shop at the beach.

Dishwasher

Our dishwasher is located in servicehouse 3. Further instructions on how to use it is placed on the machine.

Gasol

Closest place is at Gulf in Grebbestad, around 6 kilometers from the camping.



Grill

There is a barbequeplace on the right side of the beach. See our map. You can also borrow from the reception. Please note that disposable grills is not allowed to be placed directly on the gras.

Handicap

Handicapable toilet and shower is located in servicehouse 1 & 3. You can borrow a key in the reception.

Defibrillator

You will find a defibrillator in our Bistro.

Inflatable bouncy cushion

Our bouncy cushion is located at the beginning of the camping next to the big parking lot and the miniaturegolf.

Dogs

Walking your dog is allowed but your dogs business is not allowed on the campsite. The result of your dogs business is the dogowners responsibility to take care of.

Playgrounds

Our brand new playground is at the beginning of the campsite. The other one is behind our cottages and is most suited for the smaller children. We also have a bigger playground at the beach. Please keep in mind that silence after 23 PM also applies to the playgrounds.

Running

Around the campingsite there are a lot of track and trails for the runner. Our tip is to discover the beautiful trails around Tjurpannan, the nature sanctuary. Further in this folder you can find a map with a few suggestions of trails.



Macke Mackerel

Macke is the campsites own mascot. You will find his home at the beach.

Mackeclub

Our own club for kids! During peak season we have activities for kids in all ages. Look at our activity program to see what we are up to when you are here.

Miniaturegolf

You will find our miniaturegolfcourse next to the big parking lot at the beginning of the campsite. Payment is made in the reception. 30 SEK / person.

Reception

Located at the beginning of the camp site. Here is where you check in and out from your stay.

Smoking

Smoking is only allowed by the ashtrays which is located around the servicebuildings.

Nursing room

Is located in servicehouse 1 & 3.

Garbage and recycling areas

At Saltvik we separate our trash in plastic, paper/karton, metal, glas & combustable. You will find our recycling areas by servicehouse 1 & 3.

Strandhänget

Strandhänget is our shop at the beach. During w. 28 - w.31 its opened 11.00-18.00 every day as long as the weather allows it. Here you can rent SUP, motorboats and pedalos. You can also buy ice cream, coffee and lighter snacks.

Bedclothing

Are available for rent in the reception.

Tjurpannan

Our beautiful nature sanctuary that enfolds the campsite! This place is an absolut must see. You will find maps and more information in our reception and also in this folder.

Training

Up by the reception we have a brand new outdoor-training gym. During our peak season we have group training on the beach and bootcamp on Tjurpannan. You can find more information in our activity program.

IMPORTANT PHONENUMBERS

Reception: +46 525-212 49 #1

Saltviks Bistro: +46 525-212 49 #2

Emergency: 112

Police: 114 14

Healthcare information: 1177

Health center Tanumshede: +46 10-441 51 00

Kvartersclinic Tanum: +46 525-640 40

Taxi West: +46 525-459 000

Grebbestad infocenter: +46 525-611 88

Fire Rescue: +46 525-180 00

Dental care Tanum: +46 10-441 89 90

Dental care Jour: +46 522-920 00

Laundry

Laundry room is available in servicebuilding 2 and 3. There is a total of 4 washing machines and 4 tumblers.

1 laundry = 4 x 10 SEK coins

30 minutes tumbler = 1 x 5 SEK coin

WiFi

To use our internet just connect to "saltvik", no password needed. Keep in mind that the network have different strength depending on your location. WiFi in our cottages is "Saltvik Stugor", no password needed to connect.





ACCOMODATIONS

Are you looking for a accomodation in a idyllic archipelago enviroment?

Here at Saltvik you can make a reservation for your caravan, motorhome or tent.

If you would like to live a little more remote but with a fantastic view over the ocean we recommend our trailer "Klippan".

You can also rent one of our popular, fully equiped cottages!

COTTAGE

At the campsite we have 22 cottages with 4+2 beds. The cottages are 32 sqm and have 2 bedrooms with a bunkbed in each room and a sofa bed in the livingroom. Outdoor furnitures are on the porch.

Parking spot for residents in our cottages is specific for your cottage. Only one car per cottage. Extra cars in the company are welcome to park by the parking area at the beginning of the campsite. A few of our cottages are pet friendly. Contact our reception for further information.

- ✓ 4+2 beds
- ✓ Shower
- ✓ WC
- ✓ Fridge
- ✓ TV
- ✓ Stove
- ✓ Porcelain
- ✓ Cutlery
- ✓ Cookware
- ✓ Freezer compartment
- ✓ Pillow and covers
- ✓ Outside furnitures
- ✓ Coffee maker
- ✓ Wi-Fi
- ✓ Micro



Klippan, Höjden, Utsikten and our cottages are, during peak season, only available for booking: sunday-sunday, sunday-thursday, thursday-thursday



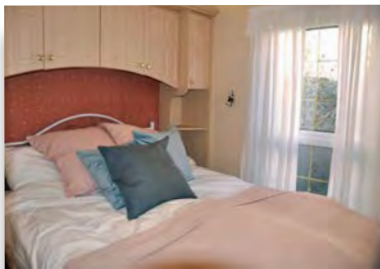


KLIPPAN

Do you want to stay a little more remote with a fantastic view? Then our trailer "Klippan" is the right choice for you!

As the name applies, Klippan (The Cliff), is located on a small mountain rise. It is the perfect place to enjoy and look out over the ocean and campsite. In the trailer there are two bedrooms, one with a queen size bed and one room with two single beds. The kitchen is equipped with stove, oven and microwave. The trailer contains both toilet and shower.

- | | | |
|-----------|-------------|----------------------|
| ✓ 4 beds | ✓ Stove | ✓ Pillow and covers |
| ✓ Shower | ✓ Porcelain | ✓ Outside furnitures |
| ✓ WC | ✓ Cutlery | ✓ Coffee maker |
| ✓ Fridge | ✓ Cookware | ✓ Wi-Fi |
| ✓ Freezer | ✓ Micro | ✓ TV |



I AM ALSO
ALLOWED TO
STAY IN
KLIPPAN!

Make your reservation today at
www.saltvikscamping.se



CARAVAN

Here at Saltvik you can rent area for your caravan and mobile home. All of our camping spots are with electricity except for the area for tents. In a few areas we also have water and drain. To make sure you get the spot that make your standards we have marked out all of our different campsite areas on the map.

Caravan/mobile home



Caravan + water/drain



MOBILE HOME

You can find our specific area for mobile home is marked with orange on the map. Just by the water on the right side of the campsite you can find our amazing mobile home spots. They include electricity, water and drain. On the map you will find these named H1-H8. H1-H3 is for mobile homes with a maximum length of 6 meter and H4-H8 with a maximum of 8 meters. These spots are placed 50 meters from the beach, 50 meters from service-house and 250 meters from our restaurant and boutique. You can of course pick one of our other available spots that are marked with the color orange and yellow on the map. The areas that are marked with the half box green is with water and drain.

Mobile home

Caravan/mobile home

Mobile home + water/drain





Price?

Check our website to find out what the exact price is for your stay. You can also call us at +46 525-212 49 and we will help you with your reservation!

TENT

The tent area is located 100 meters from the ocean, servicebuilding and restaurant. Here you can find 15 spots for tent. Each spot is 50sqm bit. By your tent there is also room to park your car.

If you wish to book a site with electricity you can choose a ordinary camp site for caravan. Our tent sites are on the map marked with the colour pink. If you would like to have a tent spot with electricity they are marked with purple on our map.

Tent



Tent with electricity



ALL SEASONS-SPOTS

At Saltvik it has become very popular to stay all season. Our spots for summer is currently full but if you are interested to be one of our all season-guests you are more than welcome to fill in a application on our website:

<https://saltvikscamping.se/en/accommodation/all-season-spots/>

If you are interested in staying here with us during spring, fall or winter season you can contact us at info@saltvikscamping.se or call us at +46525-21249 and we will help you!



UTSIKTEN & HÖJDEN

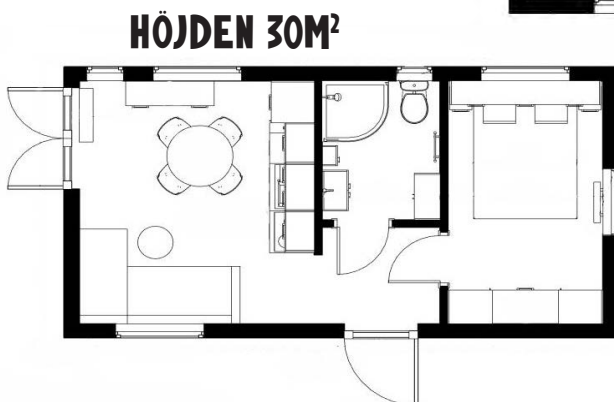
NEW IN 2022!

Along the mountain side to Tjurpannan you can find our brand new trailers called Höjden (The Height) & Utsikten (The View). Both trailers are fully equipped, have a lot of room and are very well planned with a high standard for up to 6 persons. The Height contains a bedroom with one king size bed and a sofa bed. A total of 4 people can live in this trailer.

The View is a little bit bigger thanks to another bedroom that contains one bunk bed which makes it perfect for a larger family or a group of friends. A total of 6 people can live here. The trailers are surrounded by newly built terraces overlooking both the ocean and the campsite.

You can read more about our trailers on our website.

- ✓ Fridge & freezer
- ✓ Micro
- ✓ Dining table
- ✓ Chairs
- ✓ Coffee maker
- ✓ Lounge furniture
- ✓ Outdoor terrace
- ✓ Wi-Fi
- ✓ TV
- ✓ Sofa bed
- ✓ Desk (Utsikten)
- ✓ Wardrobe
- ✓ Storage
- ✓ Blackout curtains
- ✓ AC
- ✓ Ceramic hob
- ✓ Porcelain
- ✓ Cuttlery
- ✓ Stove
- ✓ Dishwasher
- ✓ 1 king size bed
- ✓ Pillows & covers
- ✓ Bunk bed (Utsikten)
- ✓ Shower
- ✓ WC
- ✓ Terrace with a view







Stig mot
Tjurpannan

Grävatten



Servicehus
3

Samlingsplats
för barnklubb

Strandhänget

Badplats

Solnedgången

Klippan

Servicehus
2

Butik

Restaurang

Uteservering

TE1 TE3 TE5 TE7
TE2 TE4 TE6

Utsikten

Höjden

Servicehus
1



- | | | | |
|--|---------------|--|---------------|
| | Skötrum | | Hjärtstartare |
| | Träningsyta | | Latrin |
| | Kök | | Badplats |
| | Tvättstuga | | HWC |
| | Dusch | | HD |
| | Lekplats | | Vattenposter |
| | Brandsläckare | | Hoppkudde |
| | Grillplats | | Återvinning |
| | Utegyrn | | Fotbollsplan |

- | | |
|--|----------------|
| | Säsongsplats |
| | Tält |
| | Tält/EI |
| | Husbil |
| | Husvagn/Husbil |
| | Avlopp/Vatten |





RESTAURANT

- THE PLACE FOR THOSE WHO WANTS TO ENJOY SOMETHING REALLY TASTY!

Welcome to Saltviks Bistro and Bar!

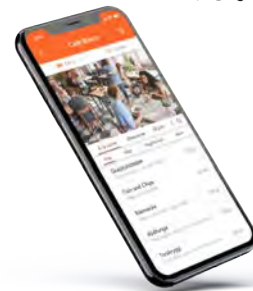
After a day at the beach you can enjoy something really good, after all you are on vacation!
At the Bistro we serve food with a nice bistrofeeling. On the menu you can find a mix of easier snacks to proper meals and tasty desserts. Try one of our famous burgers or exquisite pizzas and enjoy a nice drink! We also have a huge selection of favorites for the smaller campers. At the Bistro you can also find vegan and vegetarian courses, enough said, we have something for everyone! If you are craving something sweet and cooling, we also have soft ice cream and milkshake!

During spring 2022 we renovated our outdoor seating so now you can enjoy both great food and an amazing view.

If you want to enjoy restaurant food in your caravan or cottage, we also offer a few of our courses take away. Order with our app Ancon Order or come by us at the Bistro and make you order there.



ANCON ORDER



Avvoid line-ups and crowding!

You can easily make your take away order and pay directly in your phone or tablet. Download the app **Ancon Order** for take away.





BOUTIQUE

- ALWAYS FRESHLY BAKED BREAD & HOT COFFEE!

In the middle of the campsite you will find the big red house where our service boutique is located. Every morning you can enjoy new baked bread and hot coffee. You can also buy things you may need to cook together a meal on your vacation.

In our well sorted boutique you can also find icecream, soda, sweet bread, camping equipment and things you may need for your everyday use.

When you visit our boutique do not miss the shelf with our own Saltviks products. There you can find these beautiful hoodies!



Open every day
during peak
season

8.00-22.00



WELCOME INSIDE AND ENJOY A
COFFEE, CAPPUCHINO OR LATTE!





Saltviks Camping
HAVET. KLIPPORNA. KRABBEISKET. FAMILJEN.

STRANDHÄNGET

- THE KIOSK WITH THE BEST VIEW!



Down by the beach you can find our icecream kiosk Strandhänget. Take a break from bathing and enjoy a icecream, lighter sandwiches and a nice cup of coffee. Here you can also rent one of our pedalos or stand up paddle boards. If you want to enjoy the ocean, we also have a motorboat for rental. If you would like to rent our boat, please contact our reception for further information. Strandhänget is open every day from july 8th until august 7th. In case of bad weather, the kiosk is closed and instead you are welcome to the boutique and restaurant.

HERE YOU CAN RENT

SUP

Pedalos

Rowing boat

Motorboat "Väcker af Saltvik"



←
VÄCKER AF SALTVIK
YAMARIN 46 SC with 40 HK
motor and
Garmin GPS/chart

BOAT-TOURS & TAXIBOAT

"Leontina Af Saltvik"

Our new boat with its own skipper!

DISCOVER BOHUSLÄNS
BEAUTIFUL AND UNIQUE
ARCHIPELAGO AT SEA!

ARCHIPELAGEO TOURS

BATH TOURS

TOURS TO FJÄLLBACKA

EVENING TOURS TO

GREBBESTAD AND TANUMSTRAND

PRIVATE TOURS



HTevent

Book now at
+46708219032



KIDS CLUB

In our childrens club "Mackeklubben" we have activities every week. If you like to fish crabs, go on scaventure hunt and to play on playgrounds, check out our event calender on the website or the activityschedule to find the activities that suits you. The gathering spot for all activities is at the beach.

Mackeklubben started in spring 2015 when a mackrell decided to visit the bay. He liked it here so much that he made it his home. Macke is his name and he loves to play outside and in the ocean!

Swim as a fen and run with your legs!

I will see you in the sun...

/ Macke Mackrell



During the summer we also have activities for the kids with "Campingkul". Together with them we have circus school, bouncy castles, outdoor movies and more. You will find all the information on our webside.





TRAINING AT SALTVIK

Beach workout

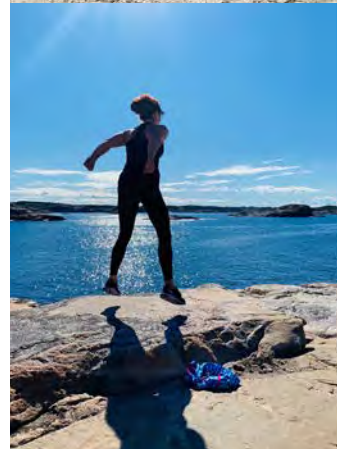
Start the day in the best way - with sweat, laugh and endorphins!
The workout is a mix of high intensive and mobile training.
Elin, our instructor, is a trained personal trainer with a love for OCR - obstacle course race. Do not be surprised if tires or something like that appears. This workout session is for everyone but recommended from 11 y and up. Bring towel and waterbottle. Make your reservation on our website!

Bootcamp

We run together in a group on Tjurpannan. Along the run we stop and do easier workout like situps, push ups and squats. This workout session suits everyone and we run approximately 5 km. The gathering spot is at the reception.

Trails and other

Around the campsite and on Tjurpannan you will find amazing trails and pathways. Down by the beach there is a work out place that is free to use. During spring 2022 we also installed a new outdoor gym by the miniature golf. Do not miss out on getting stronger during your vacation!



PERSONLIG TRÄNING. 
SALTVIKS CAMPING
HAVET. KLIPPORNA. LÖPNING. STYRKA.

OUR ADVICE!!!!

This is our amazing personal trainer Elin!
If you need a extra push in your training, talk to her!

v. 28 - v.31

Mondays: Beach Workout

10.00 at the beach!

Wednesday: Bootcamp

08.30 at the reception!

Fridays: Beach Workout

10.00 at the beach!





TRAILS

Around Saltvik there are a few trails and roads for the runner or for the one who just want to enjoy the amazing enviroment. Down below on the map you can see 3 different excursions.

The pink spot marks the reception at Saltvik.

RED: Gullbringa, 5 km.

BLUE: Havstenssund, 14,5 km.

BLACK (hard): Tjurpannan, 4,8 km





TOURIST ATTRACTIONS

Around in Tanum there are activities for everyone. Down below we have listed a few favorites. You can easily find out more information on the web. The magazines Upplev Tanum and Veckovis also contains information on activities in the area.

Älgafallet – The direct translation is “the moose fall”, which is a bit funny and has nothing to do with the sight. Älgafallet is a **waterfall** placed in the northeast part of Bullarebygden and constitutes the border to **Norway**. At the bridge on top of the waterfall you can see the Swedish and Norwegian flags that marks out the border. The waterfall is the highest one in Bohuslän and the view is amazing!



Sportshopen – 8000 m2 store filled with outdoor equipment, clothing, and shoes! During summer they also have plenty of activities for the children. If you are planning to visit don't miss out on the beautiful glass art by **Kjell Engman**. Take road 163 through Grebbestad and you will find it on the right side!



Vitlycke museum – This is a knowledge and experience center in Tanums world heritage. There are around **600 different petroglyphs**. You can either book a guide or take your own time to interpretate the different carvings. The petroglyph in this area originates from the bronze and iron age.... Which makes them almost **4000 years old!**

Grönemad – “Munk church”
Grönemad is an old stonemason society. Just north of Grönemad there is an old nature formation from the **ice age** called Munkkyrkan. The nature formation is a tunnel like **cave** with a dept of 12 meters. By the beach there is also a big boulder, the pulpit, that is also called **the Alter stone**.

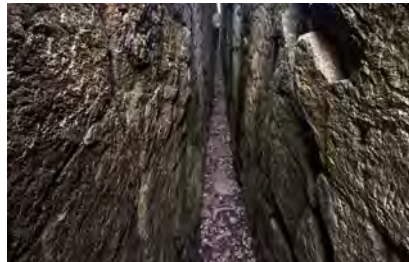


Fjällbacka – Fjällbacka is well known for the dock located in the middle of the town. The stairs leading up to **Kungsklyftan** is also located from the dock and it is well known among the Swedish people because of the movie Ronja Rövardotter, that was recorded there. Our recommendation is to take the stairs all the way to the top to enjoy the **breathtaking view**.



Skärgårdsidyllen kayak & outdoor – Skärgårdsidyllen is in Grönemad and offers **kayak and SUP rental** and the possibility to get a guided tour around the **beautiful outer archipelago**. They also offer courses if you are new to paddling and would like to learn more.

Havstenssund – a quiet oasis by the end of the road! Havstenssund is a part of the **Koster National Park** and constitutes of marine environment. If you are not claustrophobic, we recommend you visit the 50 cm width gorge, **Målarklöva**, that takes you to the top of Sunneberget where you can enjoy the **amazing panorama view** over the archipelago.



M/S Donalda – enjoy a guided tour in the archipelago with this well-preserved boat from the 1900. M/S Donalda departure from Grebbestad and offers **seal safari, tours to the Weather islands and fishing tours**. You can also enjoy a dinner below deck in the restaurant **Madvragnet** that is inspired by the history of the boat.





FISHING

Bohuslän is known for being the best seafood center in Sweden. The water outside of Grebbestad, Koster Islands and the Väder island fjord is the deepest, saltiest and the richest in species there is here in Sweden. This makes the possibilities of fishing infinite. On April 1st the fishing of sea trout begins. Although the mackerel and crab fishing peaks during June – August, if you are lucky, you can also see the mackerel school at the end of May.



LOBSTER

A little bit further into the fall the lobster fishing starts. According to tradition it begins the 1st Monday after the 20th of September. For many people the highlight of the year is when the search of oceans black gold starts, the lobster. On www.havochvatten.se/en you can find more information.

FISHING CRABS

Fishing crabs are a huge kids favorite here at Saltvik! And it is easier than you may think... In our service boutique and our kiosk at the beach you can find complete crab angling, but if you would like to do it yourself all you need is a string and a clothes peg. Then you must not forget to attract the crabs with something. Here in the bay at Saltvik, the fish has told us that the crabs are very voracious and devours both shrimps, sausage, and clams. The best place to fish crabs is around the docks or by the cliffs where the dept of the water is no more than 1 meter. The crabs don't like the heat but instead they hide among the rocks and seaweed. So, when you have your angling and your bait, you lower it down in the water and then wait for a crab to start nibble. Pull up your string and put the crab in a bucket with water from the ocean. If you would like to make the crabs more comfortable you can also put some seaweed in the bucket. Don't forget to put the crabs back in the water when you are done fishing!





TJURPANNAN

The nature sanctuary Tjurpannan is an incredibly beautiful and open sanctuary with an open horizon towards the west. What makes Tjurpannan that special is that it's missing the protective outer archipelago and therefore it is considered one of Bohusläns most exposed mainland parts.

Since long ago Tjurpannan is, because of the unprotected area, a feared passage among seamen. When it is windy the waves hit the cliffs and offers a dramatic nature experience, and the wet cliffs is both horridness and dangerously slippery.

Due to the extremely strong under current it is wise of you who would like to take a bath, to wait until the wind is gone.

The inner parts of the sanctuary are dominated by heather, and you may also find the landscape flower of Bohuslän, the perfoliate woodbine. Among the cobbles there is a bunch of rare flowers and plants, common butterwort is one of them. Do not be fooled by the beautiful purple flowers because the butterwort is one of the few flesh-eating plants here in Sweden. You can find more information about the nature sanctuary and it's fauna on the internet.

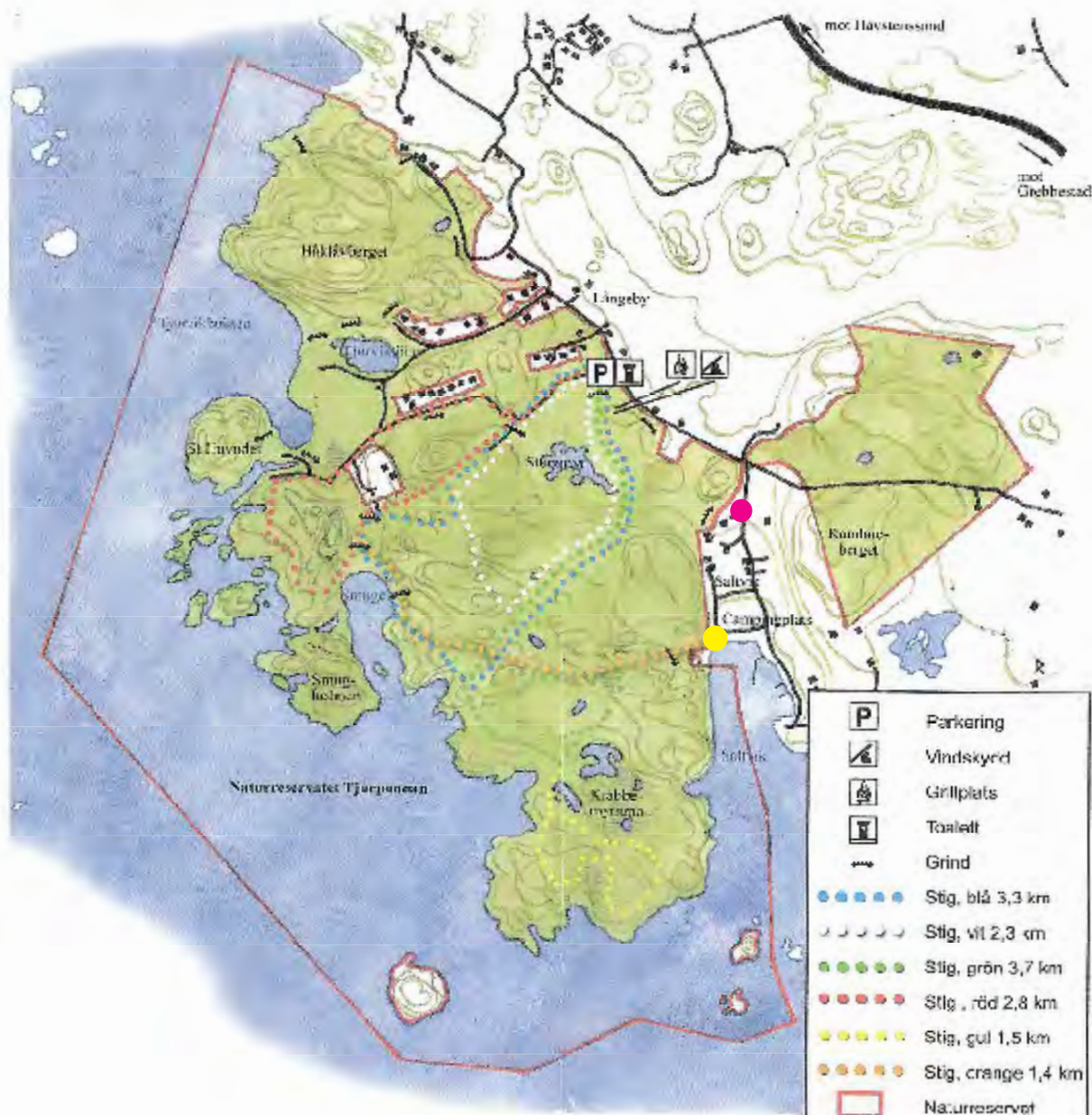
Approximately 1200 meters out in the ocean you can see the lighthouse Väcker.

The lighthouse is 13,4 meters high and got it's name during 1930. Väcker guides the sailing from south to west towards Havstenssund and the fairway south towards Grebbestad. When it is very windy the waves hit the reinforced concrete that build the lighthouse, which makes it almost always over flushed and slippery from the seaweed.





MAP OVER TJURPANNAN



PATHWAYS FROM THE CAMPSITE

On the right side of the beach you will find a pathway to Tjurpannan directly from the campsite. The pathway starts by the yellow spot on the map. The pink spots marks out another path but is a little bit harder to find but is placed a little bit further down from the reception.

A photograph of a wooden dock extending into a calm blue lake. In the background, a yellow inflatable boat with several people is on the water. The shoreline is rocky and covered with sparse vegetation.